



Infant Sleep Products - Part 2 Information Standards





Important definitions to help identify what infant products will be affected.

Infant sleep product:

1. means a product that:

(a) is designed, intended, marketed, supplied, or offered for supply, for use as a sleeping facility for an infant or for use as a facility to soothe or settle an infant; and

(b) has a surface on which an infant may lay; and

2. includes a product that is designed to convert to an infant sleep product.

Inclined non-sleep product means a product that:

(a) is designed, intended, marketed, supplied, or offered for supply, for use by an infant; and

(b) has a surface on which an infant may lay; and

(c) when used, may position the infant's head above the horizontal; and

(d) is not supplied, or offered for supply, as an infant sleep product and does not purport that it is suitable for infant sleep, even if an infant may fall asleep when using the product.

Infant, in relation to an infant product, means:

- a person under the age of 12 months; or
- person over the age of 12 months that might reasonably use the product.



Important definitions to help identify what infant retailers will be affected.

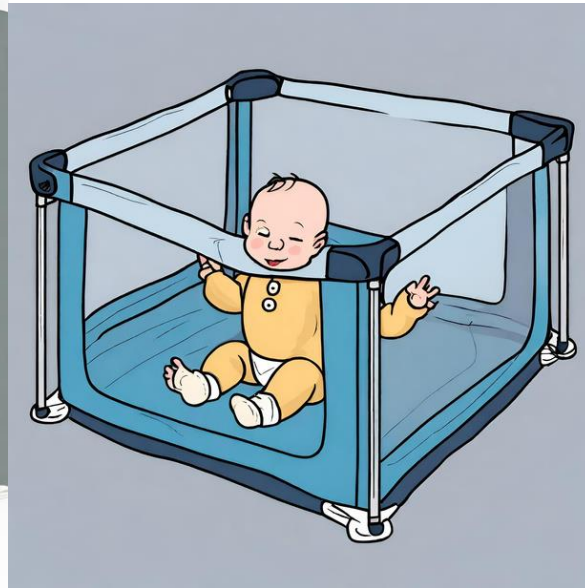
Retail premises

- means premises in which consumer goods are displayed for retail sale to consumers.

Electronic platform

- means a service that enables a business to supply, or offer to supply, goods or services to consumers over the internet (whether by a website, an online marketplace or other means, and whether operated by that business or another business).

Information to be provided with infant products.





Information to be provided with infant products.

(1) Information relating to the safe use of an infant product must be supplied with the product.

(2) The information must appear in text and include the following:

(a) if the product is not supplied fully assembled:

- instructions on how to assemble the product; and
- a list of the product's parts;

(b) if the product can be folded or collapsed without disassembly—in on how to fold or collapse the product and the reverse;

(c) if the product is designed to be used with a mattress—the dimensions of the mattress recommended by the manufacturer;

(d) if the height of the product is adjustable—instructions on how to adjust the height of the product;



Information to be provided with all infant products.

- (e) a warning that consists of the words “WARNING: check this product regularly before using it, and do not use it if any part is loose or missing or if there are any signs of damage. Do not substitute parts. Contact the manufacturer if replacement parts or additional instructions are needed”;
- (f) each warning required under [section 8](#) to be marked on the product (see example);
- (g) all other relevant information (if any) that relates to the safe use and maintenance of the product.



Markings required on all infant products.

An infant product must be clearly and permanently marked with:

(a) if the product is manufactured in Australia or New Zealand:

- the manufacturer's name and address; or
- the manufacturer's trade mark and address; or

(b) if the product is not manufactured in Australia or New Zealand:

- the product's country of origin; and
- the Australian importer or distributor's name.

Warnings required on all inclined non-sleep products.



The following warnings (or words to that effect) must also be marked on an infant product that is an inclined non-sleep product:

- do not use this product for infant sleep;
- do not leave infant in this product unsupervised.

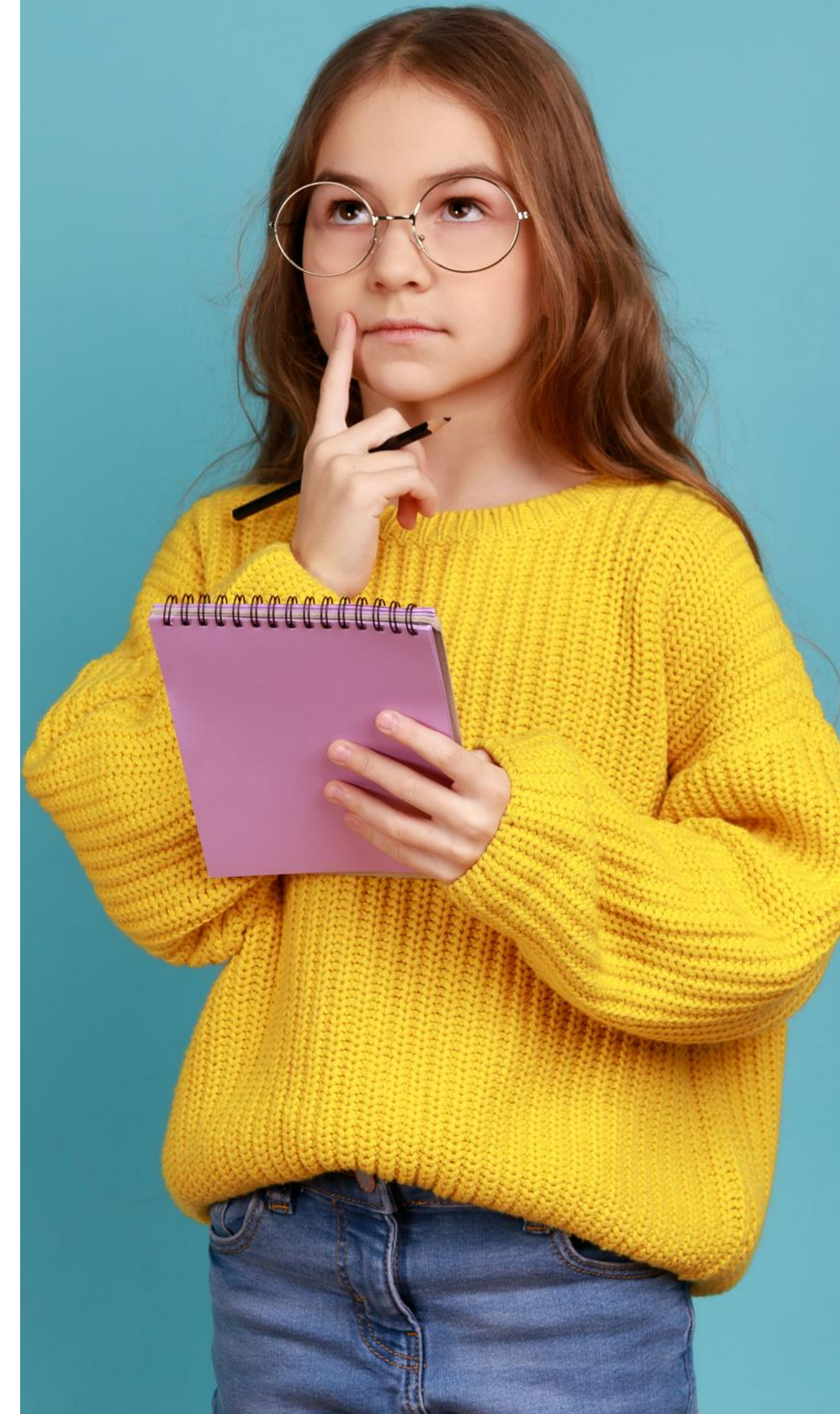
Requirements for warnings on all infant products.

A warning that is required under this section to be marked on an infant product must:

- appear in text; and
- be clearly visible, prominent and legible; and
- be durable and permanently affixed to the infant product.

The warning must include both:

- the alert word “WARNING” with the letters of the alert word in upper case; and
- an internationally recognised safety alert symbol that consists of a triangle that is at least 6 mm high and has an exclamation mark inside it.



Product warning example.

WARNING

- Do not place this product near a blind, cord, strap, or similar item that could become wrapped around an infant's neck.
- Infant should be placed to sleep on a firm, flat surface.
- Do not put objects or accessories in an infant's sleep environment.
- Place infant on their back when using this product.



Triangle minimum height no less than 6 mm

The following additional warning must be included on bassinets or cradles.

- WARNING – Do not use this product when the infant begins to push up on hands and knees or has reached [insert manufacturers recommended maximum weight], whichever comes first.

Important: Check the regulation for the specific warnings required for your product type.



Warnings required on packaging of infant products.

Warnings for packaging material

(1) If packaging is supplied with an infant product, the external packaging of the product must be marked with each warning required under [section 9](#) to be marked on the product. The warnings must be clearly visible without the packaging being opened.

Warnings for plastic packaging material

(2) If plastic packaging or wrapping is supplied with an infant product, the packaging of the product must also be marked with a warning that consists of the words “TO AVOID DANGER OF SUFFOCATION TO BABIES AND CHILDREN, DISPOSE OF PLASTIC PACKAGING IMMEDIATELY”.



Requirements for warnings on packaging of infant products.

A warning that is required under this section to be marked on the packaging of an infant product must:

- appear in text; and
- be clearly visible, prominent and legible; and
- be durable and permanently affixed to the packaging.

The warning must include both:

- the alert word “WARNING” with the letters of the alert word in upper case; and
- an internationally recognised safety alert symbol that consists of a triangle that is at least 6 mm high and has an exclamation mark inside it.



Warnings to be displayed online or instore.

If a person:

- carries on a business that supplies an infant product; and
- uses an electronic platform to offer for supply the infant product to consumers;

the person must include each warning that is required under [section 10](#) to be marked on the product to also be visibly, prominently and legibly included in the infant product's description provided by the platform.

If a person:

- carries on a business that supplies an infant product; and
- uses a retail premises to offer for supply the infant product to consumers;

the person must cause each warning that is required under section 8 to be marked on the product to also be visibly, prominently and legibly displayed with the infant product at the premises.



Warnings displayed at POS - online.



Baby Cot - 3 in 1 - Crafted from Solid New Zealand Pine Wood Adjustable Base with Toddler Rail

\$599⁰⁰



Secure transaction




Returns Policy

Colour	White
Brand	Generic
Target audience	Newborn
Product dimensions	137L x 78W x 96H centimetres
Special feature	Adjustable Height

WARNING

- Do not place this product near a blind, cord, strap, or similar item that could become wrapped around an infant's neck.
- Infant should be placed to sleep on a firm, flat surface.
- Do not put objects or accessories in an infant's sleep environment.
- Place infant on their back when using this product.



Division 2—Warnings


8 Warnings on infant products

Warnings required for infant products

- (1) An infant product must be marked with a warning. The warning must:
 - (a) appear in text; and
 - (b) be clearly visible, prominent and legible; and
 - (c) be durable and permanently affixed to the infant product.
- (2) The warning must include the following:
 - (a) the alert word “WARNING” with the letters of the alert word in upper case;
 - (b) an internationally recognised safety alert symbol that consists of a triangle that is at least 6 mm high and has an exclamation mark inside it.
- (3) The warning must include statements to the following effect:
 - (a) infant should be placed to sleep on a firm, flat surface;
 - (b) place infant on their back when using this product;
 - (c) do not put objects or accessories in an infant’s sleep environment;
 - (d) do not place this product near a blind, cord, strap or similar item that could become wrapped around an infant’s neck.

Additional statements for inclined non-sleep products

- (4) If the infant product is an inclined non-sleep product, the warning must also include statements to the following effect:
 - (a) do not use this product for infant sleep;
 - (b) do not leave infant in this product unsupervised.



Division 2—Warnings

9 Warnings on infant product packaging.

Warnings for packaging material

(1) If packaging is supplied with an infant product, the external packaging of the product must be marked with the warning required under section 8 to be marked on the product. The warning must be clearly visible without the packaging being opened.

Warnings for plastic packaging material

(2) If plastic packaging or wrapping is supplied with an infant product, the plastic packaging or wrapping of the product must be marked with a warning.

(3) The warning must:

- (a) appear in text; and
- (b) be clearly visible, prominent and legible; and
- (c) be durable and permanently affixed to the plastic packaging or wrapping.

(4) The warning must include the following:

- (a) the alert word “WARNING” with the letters of the alert word in upper case;
- (b) an internationally recognised safety alert symbol that consists of a triangle that is at least 6 mm high and has an exclamation mark inside it;
- (c) a statement that consists of the words “TO AVOID DANGER OF SUFFOCATION TO BABIES AND CHILDREN, DISPOSE OF PLASTIC PACKAGING IMMEDIATELY”.

A close-up, over-the-shoulder view of a person's hands holding a tablet computer. The person is wearing a dark grey long-sleeved shirt. The tablet screen displays a website with text and a video player. The background is a light-colored wooden desk with some papers and a pen.

Division 2—Warnings

10 Warnings to be displayed instore or online.

(1) If a person:

- (a) carries on a business that supplies an infant product; and
- (b) uses an electronic platform to offer for supply the infant product to consumers;

the person must cause the warning that is required under section 8 to be marked on the product to also be visibly, prominently and legibly included in the infant product's description provided on the platform.

(2) If a person:

- (a) carries on a business that supplies an infant product; and
- (b) uses a retail premises to offer for supply the infant product to consumers; and
- (c) displays the infant product at the retail premises;

the person must cause the warning that is required under section 8 to be marked on the product to also be visibly, prominently and legibly displayed on or near the infant product on display.

Note: For example, the warning could be in the form of a hang or swing tag attached to the infant product; or a placard placed on top of or near to the infant product.